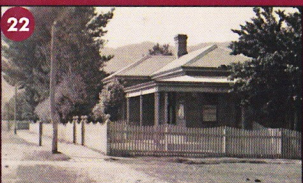




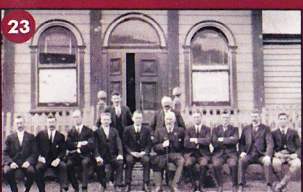
21 COURTHOUSE HOTEL

The original hotel, built in 1861 was a shingle roofed, double storey, timber building. Between 1886 & 1900 the building was bricked and a verandah added, it burnt to the ground in 1982.



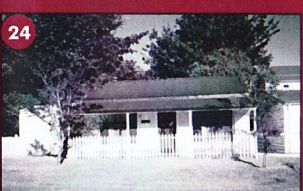
22 POST OFFICE

The present building was built of hand made bricks in 1872, and was opened for business soon after.



23 MEMORIAL HALL

Used as the Howqua Shire Offices until amalgamation with Mansfield in 1919, the building was donated to the town as a memorial to Jamieson's WW1 veterans.



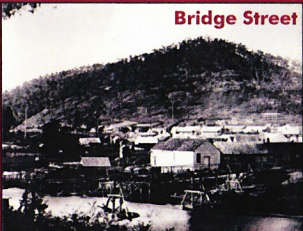
24 WYWURRI

The original 1860s building is of pole type construction with canvas walls, typical of many early buildings.

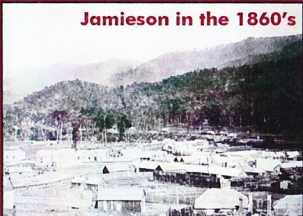


25 ST PETER'S ANGLICAN CHURCH

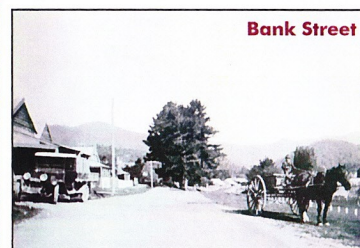
Surrounded by 100 year old oaks, this beautiful old church was inaugurated on September 28th 1865.



Bridge Street



Jamieson in the 1860's



Bank Street

A Snapshot of Jamieson's History

Following the discovery of alluvial gold in 1854 at Cashens Point to the south, the first signs of settlement began appearing on what was then known as Jamieson Flat.

Jamieson is said to be named after George Jamieson a shepherd in the area in the 1850s. It was not really a gold mining town, rather a supply town. From Jamieson, supplies would be packed by horse and mule along the narrow winding tracks to the diggers on the goldfields of the Upper Goulburn.

By 1866, according to Butler's Woods Point & Gippsland General Directory, there were 12 carriers, 5 mine offices, 22 stores, 8 hotels, 2 breweries 3 restaurants and the Theatre Royale, a police station and lockup. A red brick Courthouse which held General sessions and Court of Mines. A Post and Telegraph Office had been opened along with the Union Bank, 3 schools were operating, 2 churches, a Masonic hall, 3 doctors, a chemist and a Registrar of Births, Deaths and Marriages.

The Jamieson Chronicle was being printed by Alfred Goulding with help from his young assistant, Tom Still.


Local tradesmen at this time were 4 blacksmiths, 2 saddlers, 2 bricklayers, 4 carpenters/builders, a tinsmith, a bootmaker, a wood splitter, a tailor, a sawyer, a cabinet maker, a cooper, a confectioner and a stonemason.

By the turn of century the mining boom was over after nearly 50 years. Then came WWI, the depression of the 1930s and WWII, and by the 1950s Jamieson had settled into a slower agricultural life-style. Jamieson became part of the Mansfield Shire in 1919 and today with a permanent population of less than 100 people, it has become a popular tourist destination.

**Jamieson & District
Historical Society Inc.**

Established 4th July 1991

ABN 17819552048 Inc. No. A00239179
PO BOX 26 Jamieson 3723
Phone 03 5777 0690
email: jdhs@mansfield.net.au
www.vicnet.net/~jdhs



*Jamieson Courthouse built 1864
J&DHS Inc. Headquarters and
MUSEUM
24 Nash Street Jamieson 3723*

Self Guided Heritage Walk Jamieson



Welcome

Welcome to the historic sites of Jamieson. We invite you to take this guided walk and experience all that Jamieson has to offer. Learn about the buildings, the people and the past. Take in the landscape, gardens, wildlife and the overall beauty of Jamieson. The walk can be done in a day or over a weekend.

Heritage Walk Map

1 RIDGES COTTAGE

Built around 1864 by Michael Ridge, one of the towns early settlers. The Ridges served the community as Blacksmiths & Wheelwrights for over 50 years.

2 DIGGERS EXCHANGE HOTEL

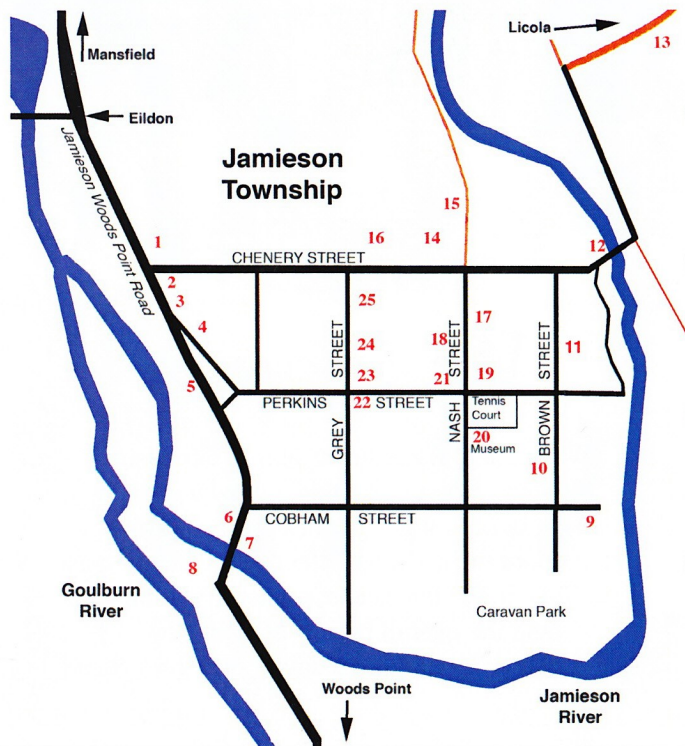
One of only three hotels still operating at the end of the 19th century, built in the late 1870's, closed by 1911.

3 MATTHEWS COTTAGE

The home of John Cole Matthews, a councillor and business man who ran the coach service between Mansfield and Woodspoint from 1899-1914.

4 OLD COLONIAL BANK

Originally built in 1867 as the Colonial Bank and managers residence for the first Bank manager Edwin Fitzroy Lusignan.



5 TOWNSEND'S COTTAGE

One of the towns original buildings, it was the butchers residence, the butchers shop was located next door.

6 HIBERNIAN BREWERY SITE

The Hibernian Brewery built in 1862 by Daniel Finn, was situated on the North Bank of the Jamieson River.

7 FINNS BRIDGE

The first bridge was a toll bridge built by Daniel Finn in the 1860's, over the years several bridges have been destroyed by floods. The new bridge opened in 1990 and was renamed Foots Bridge.

8 THE ISLAND

Where the Jamieson and Goulburn Rivers meet. Fruit trees planted in the 1860's by Dr. Nash still remain.

9 JUDDY'S HUT

An example of an early miners cottage, it was built in 1933 by miner Bill "Darkie" Herbert, and is named for WW1 Veteran "Juddy" Hampton who lived here during the 1950's.

10 POLICE STABLES

These stables were built in 1862 as part of the original police camp.

11 McQUILTEN'S COTTAGE

Originally located at Ten Mile on Sailor Bill's Creek, built in the 1890s, it was re-located after the 1939 bushfires.

12 BREWERY BRIDGE

Named for the Goulburn Brewery built in 1864 by William Grene Power, which once stood downstream.

13 CEMETERY

Here you will find headstones marking the final resting place of some of the area's early settlers and pioneers.

14 JAMIESON PRIMARY SCHOOL

Common school 814 was officially recognised on 24th September 1865 the building we see here today was completed on January 9th 1878.

15 SCHOOL RESIDENCE

In the 1860's accommodation for teachers was not a priority. A school house was first requested in 1877. Finally begun in 1888 the residence we see today was not completed until 1944.

16 ARBORETUM

A combined effort of the Jamieson community, it was planted in 1989 on the old pine plantation site, to become a picturesque addition to the town.

17 MOUNTFORD COTTAGE

Once the residence of Charles William Mountford, who owned the Mountain Brewery and Cordial Factory at Raspberry Creek.

18 SIBERIA

On this site once stood a quaint cottage built early in the 20th Century, as extra accommodation for the Courthouse Hotel.

19 ST JOHN'S CATHOLIC CHURCH

The first church was a small timber chapel erected, to the left of the current site. The present building was opened in 1900.

20 JAMIESON COURTHOUSE

Built in 1864 of local hand made bricks, the building served as a County Court, Court of Mines, and Court of Petty Sessions.

